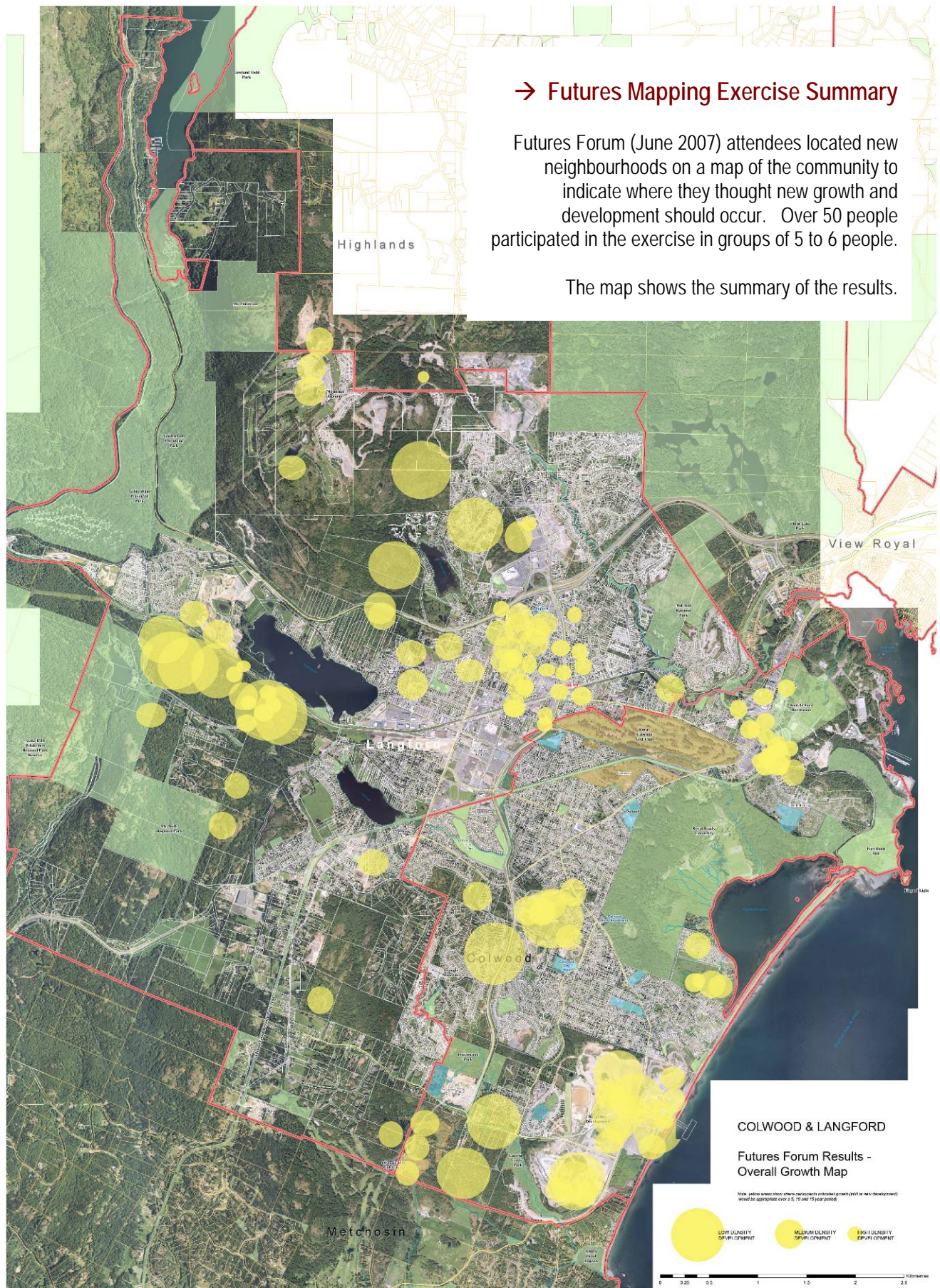


## → Futures Mapping Exercise Summary

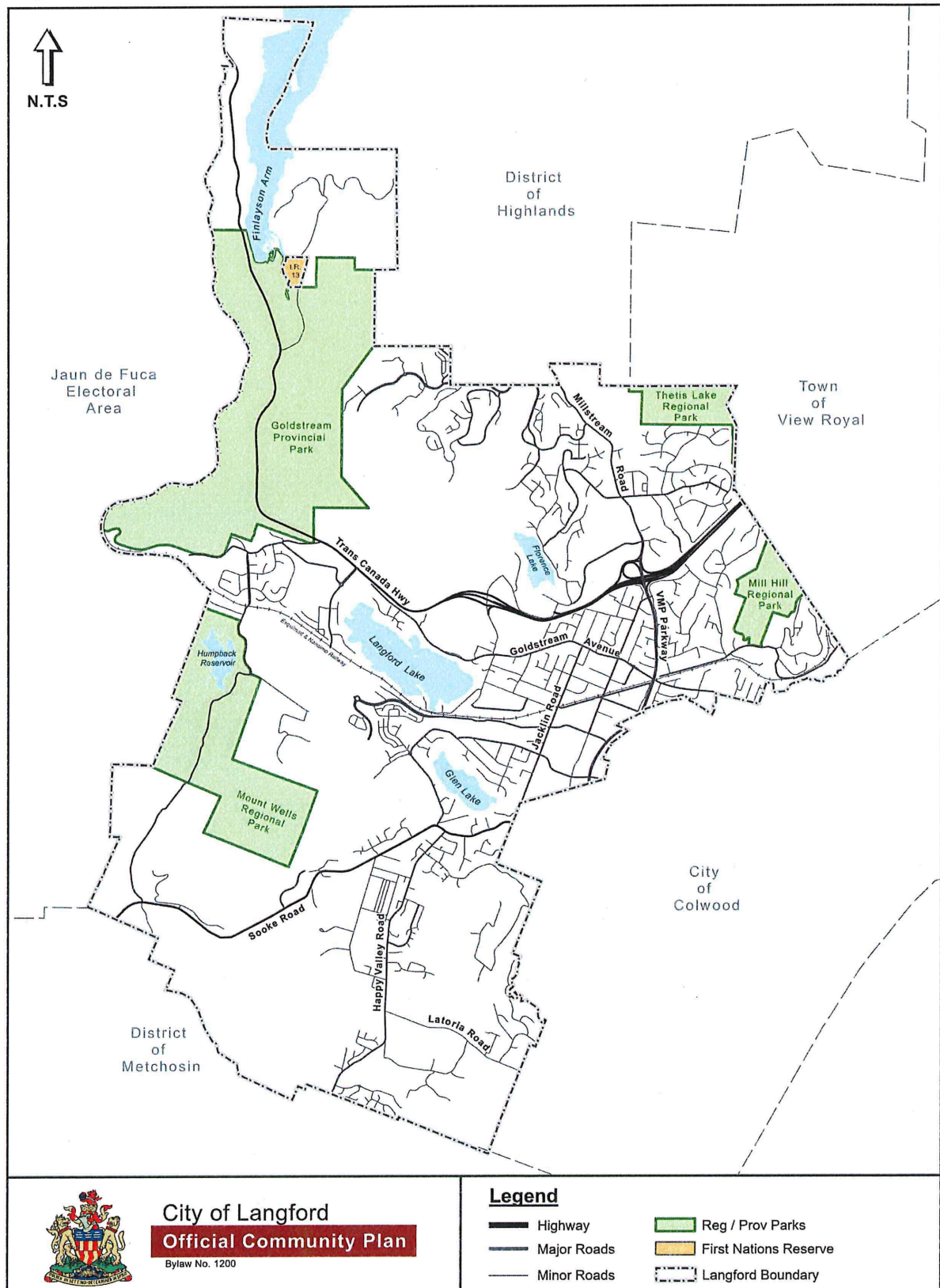
Futures Forum (June 2007) attendees located new neighbourhoods on a map of the community to indicate where they thought new growth and development should occur. Over 50 people participated in the exercise in groups of 5 to 6 people.

The map shows the summary of the results.



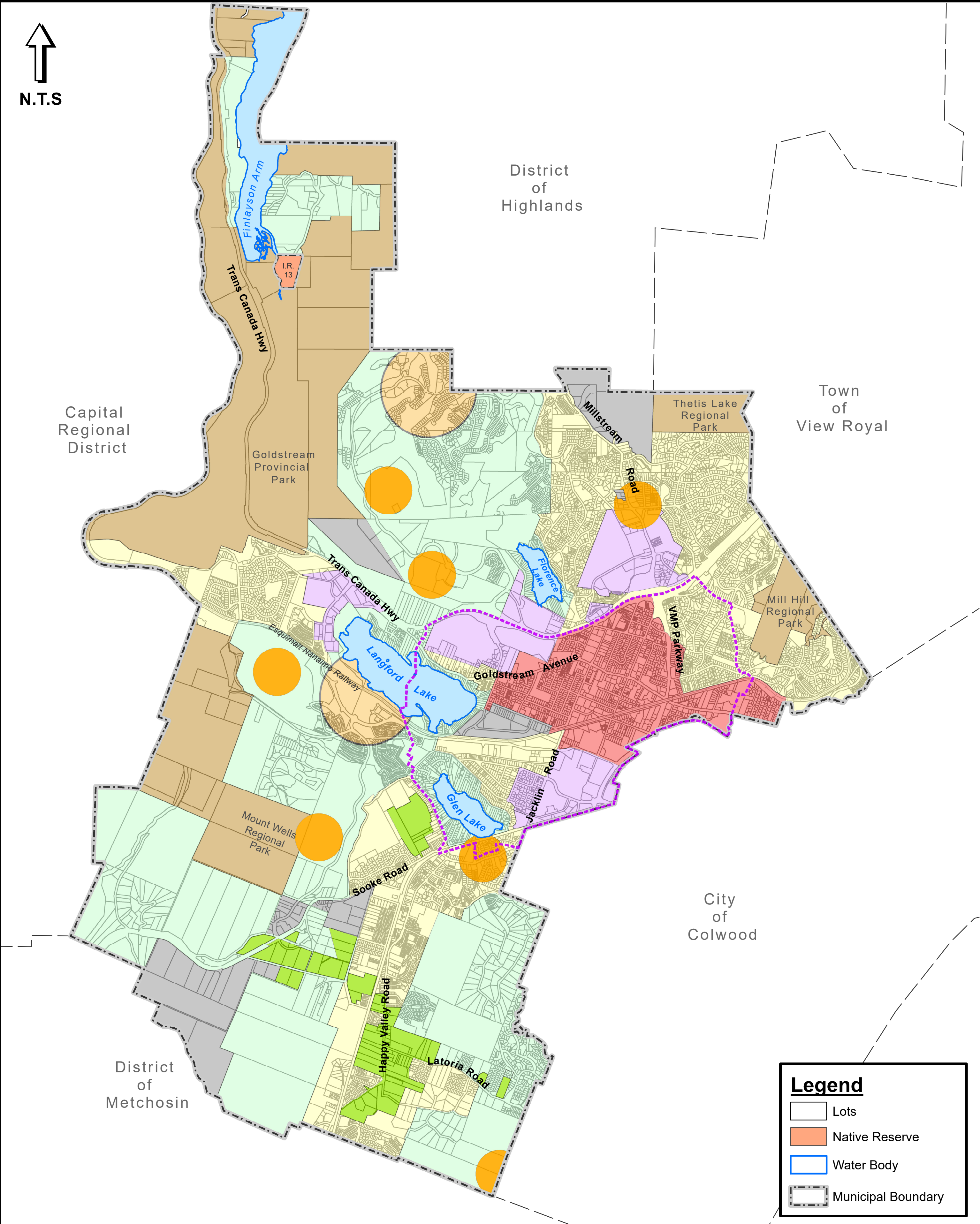


Map 1: Planning Area





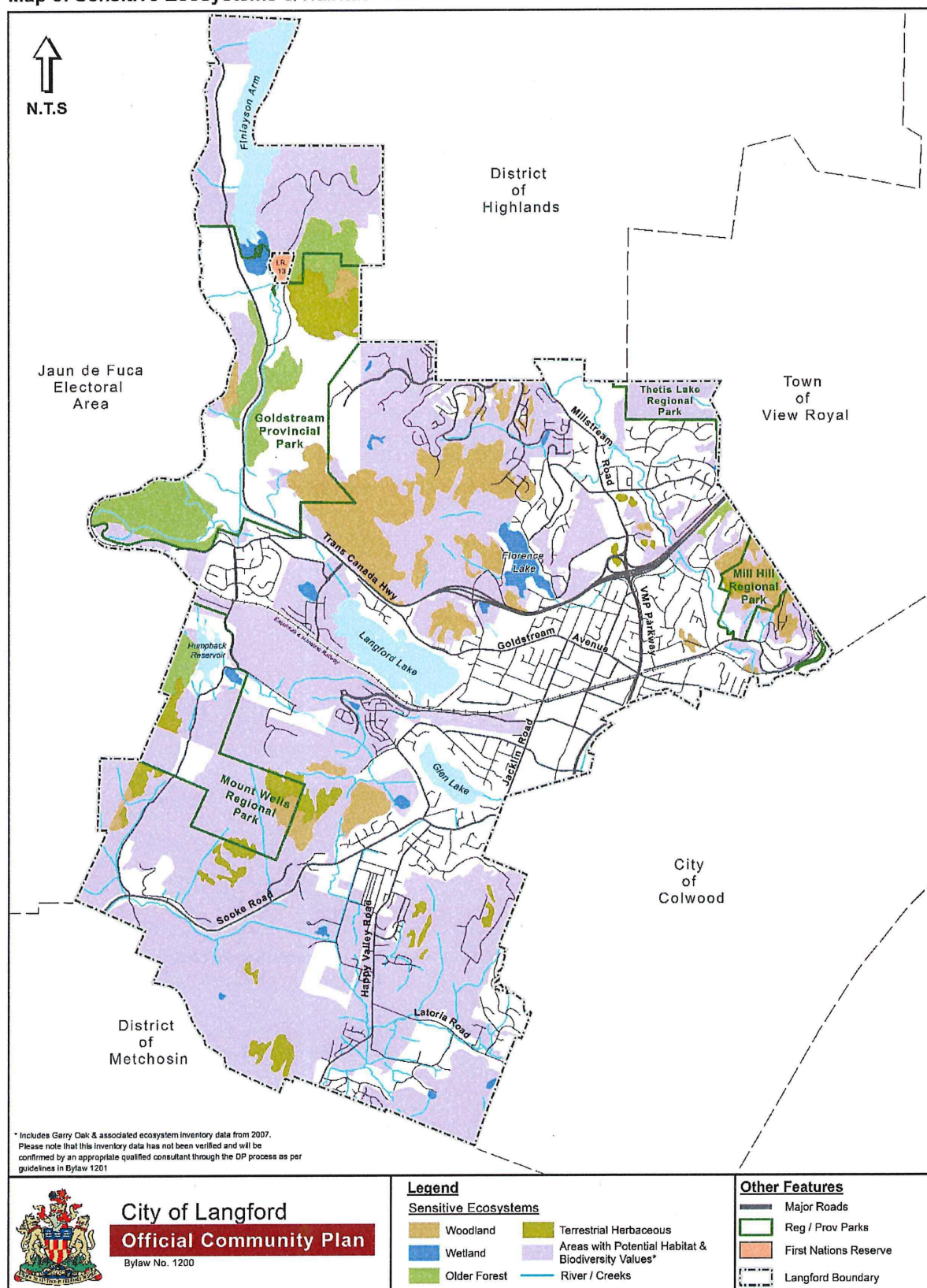
Map 2: Growth Managment & Land Use Strategy



City of Langford  
**Official Community Plan**  
Bylaw No. 1200

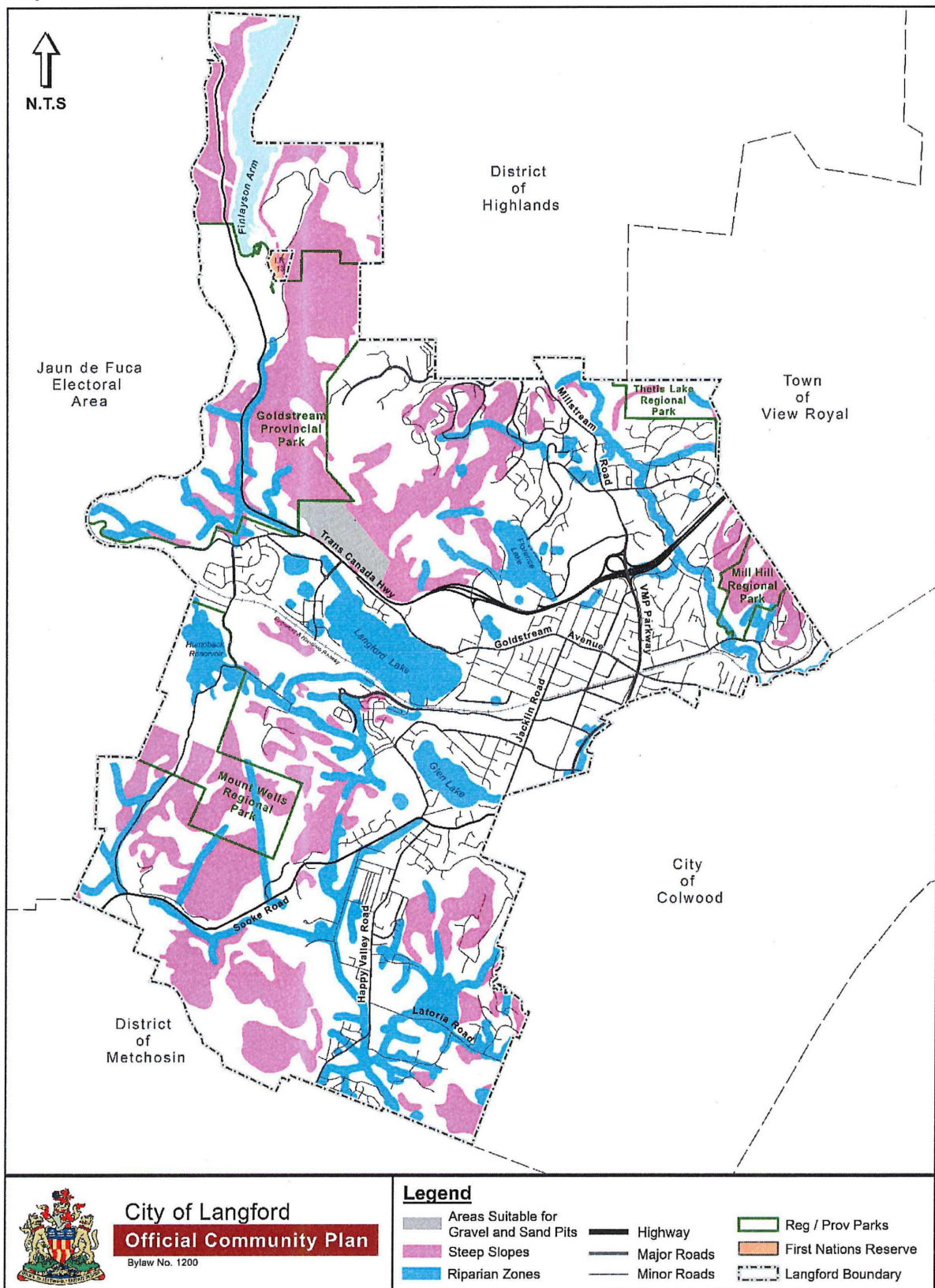


Map 3: Sensitive Ecosystems &amp; Habitat Areas



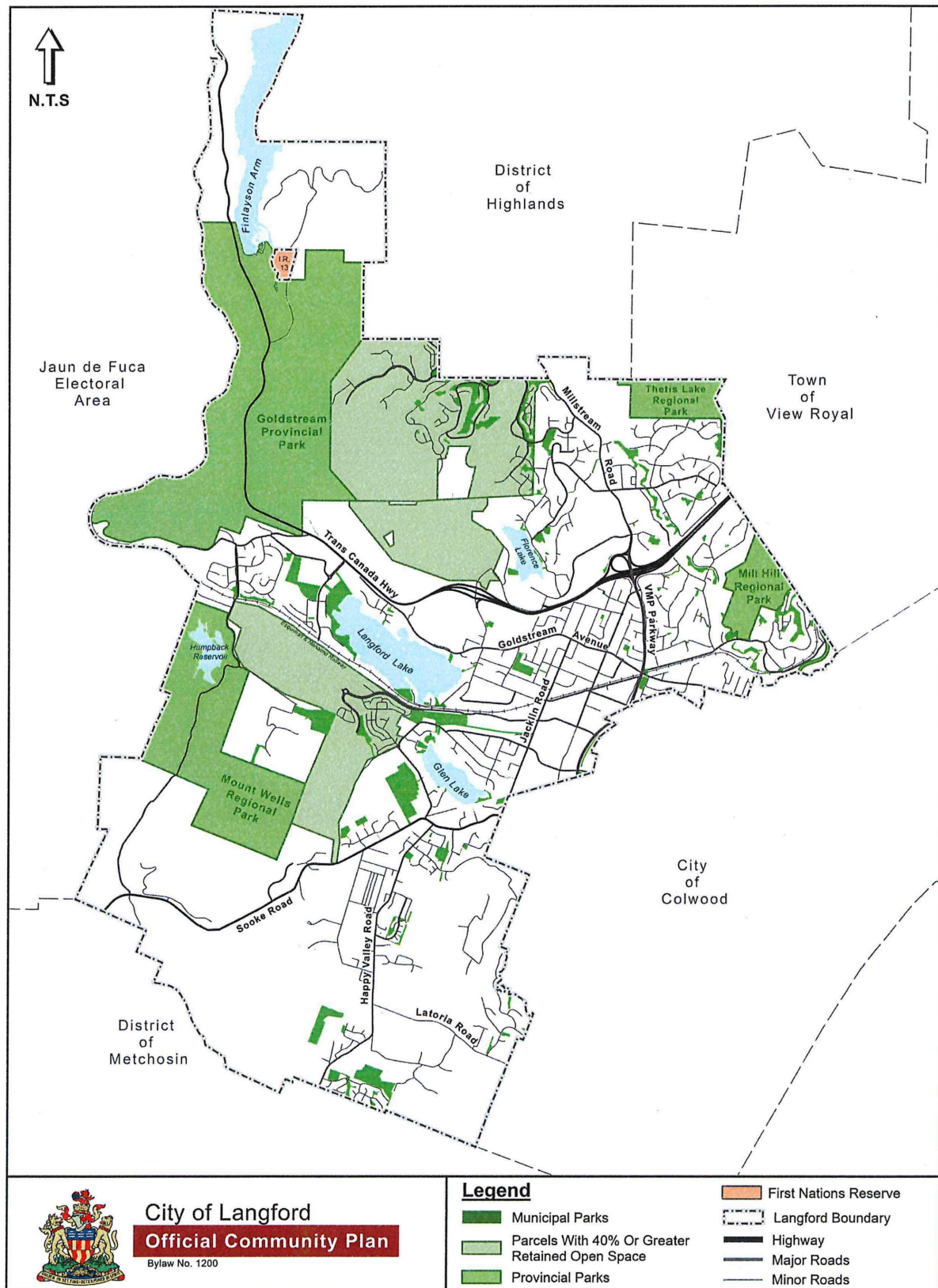


Map 4: Natural Features



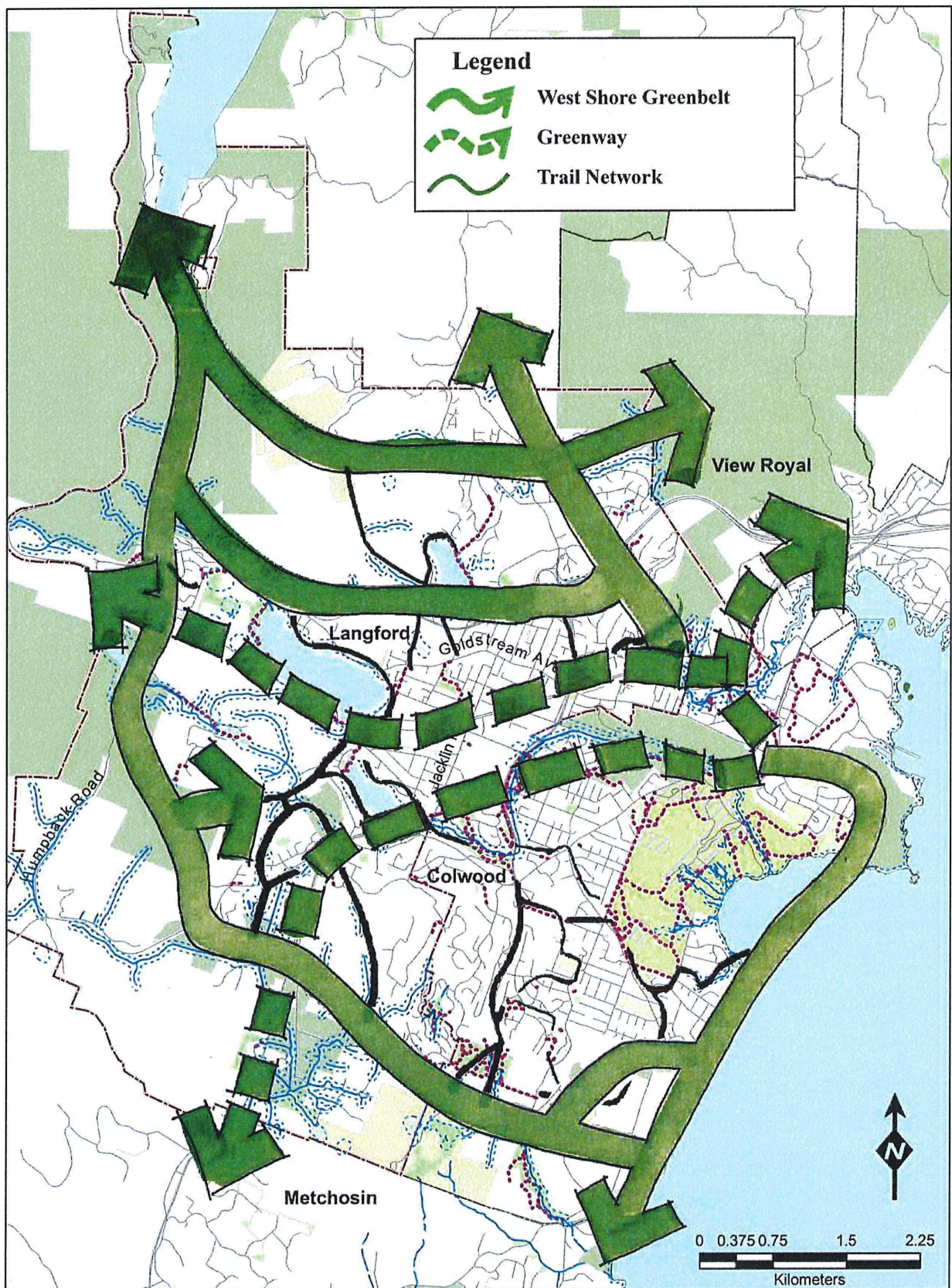


Map 5: Natural Setting, Parks & Open Spaces Inventory



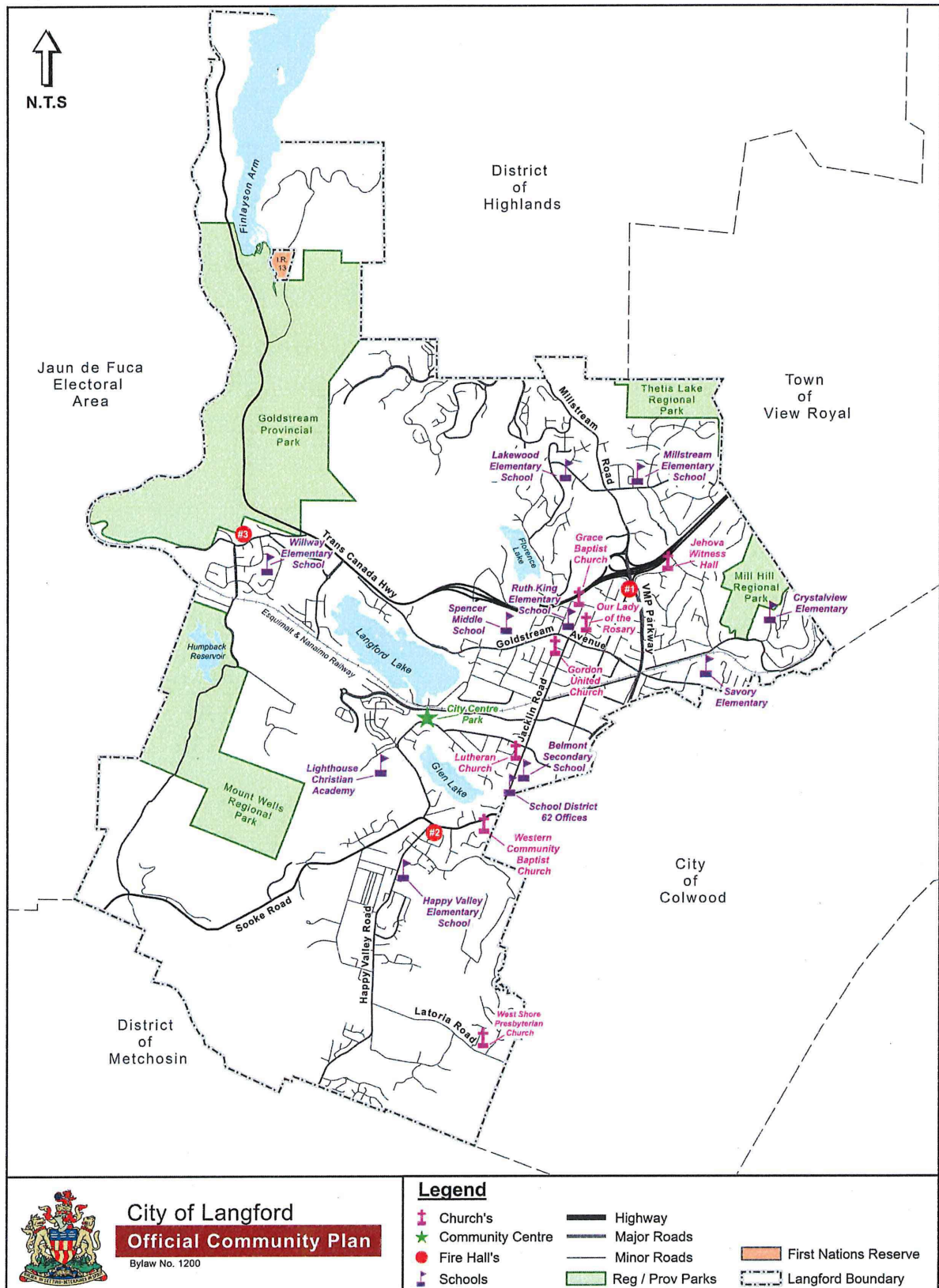


Map 6: Natural Settings Parks & Open Spaces Integration Strategy



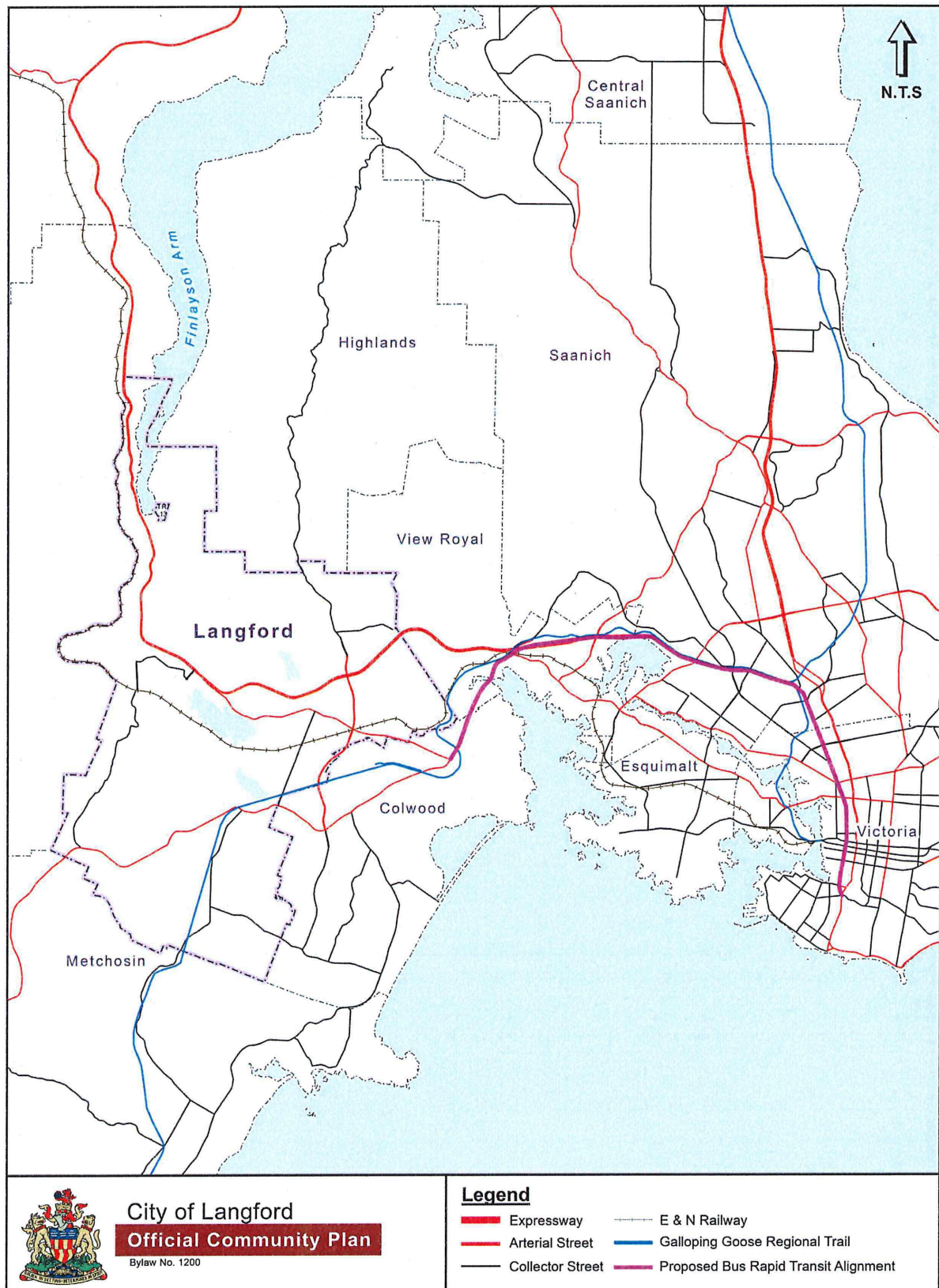


Map 7: Institutional Uses & Institutions Inventory



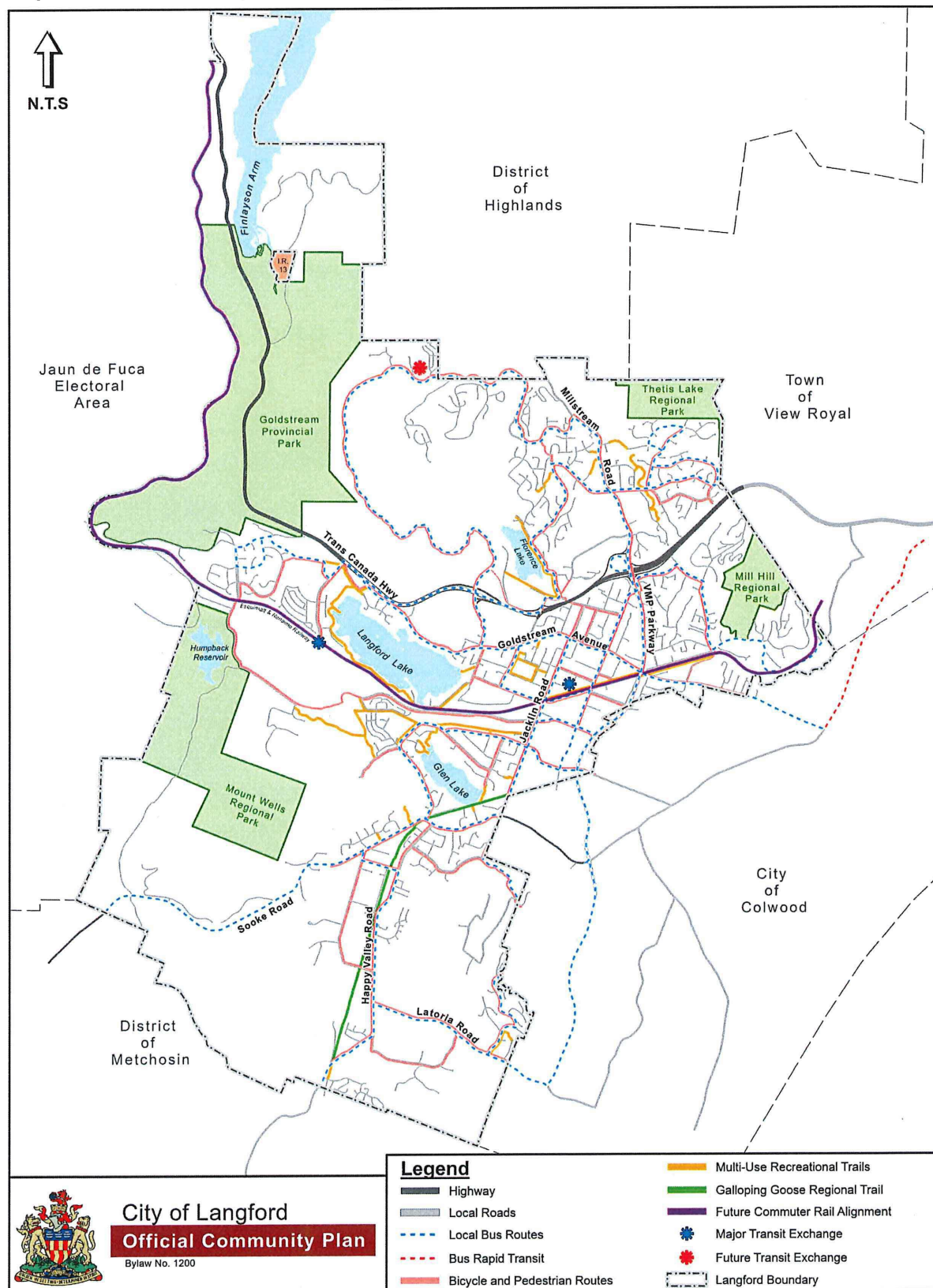


Map 8: Regional Transportation System Context



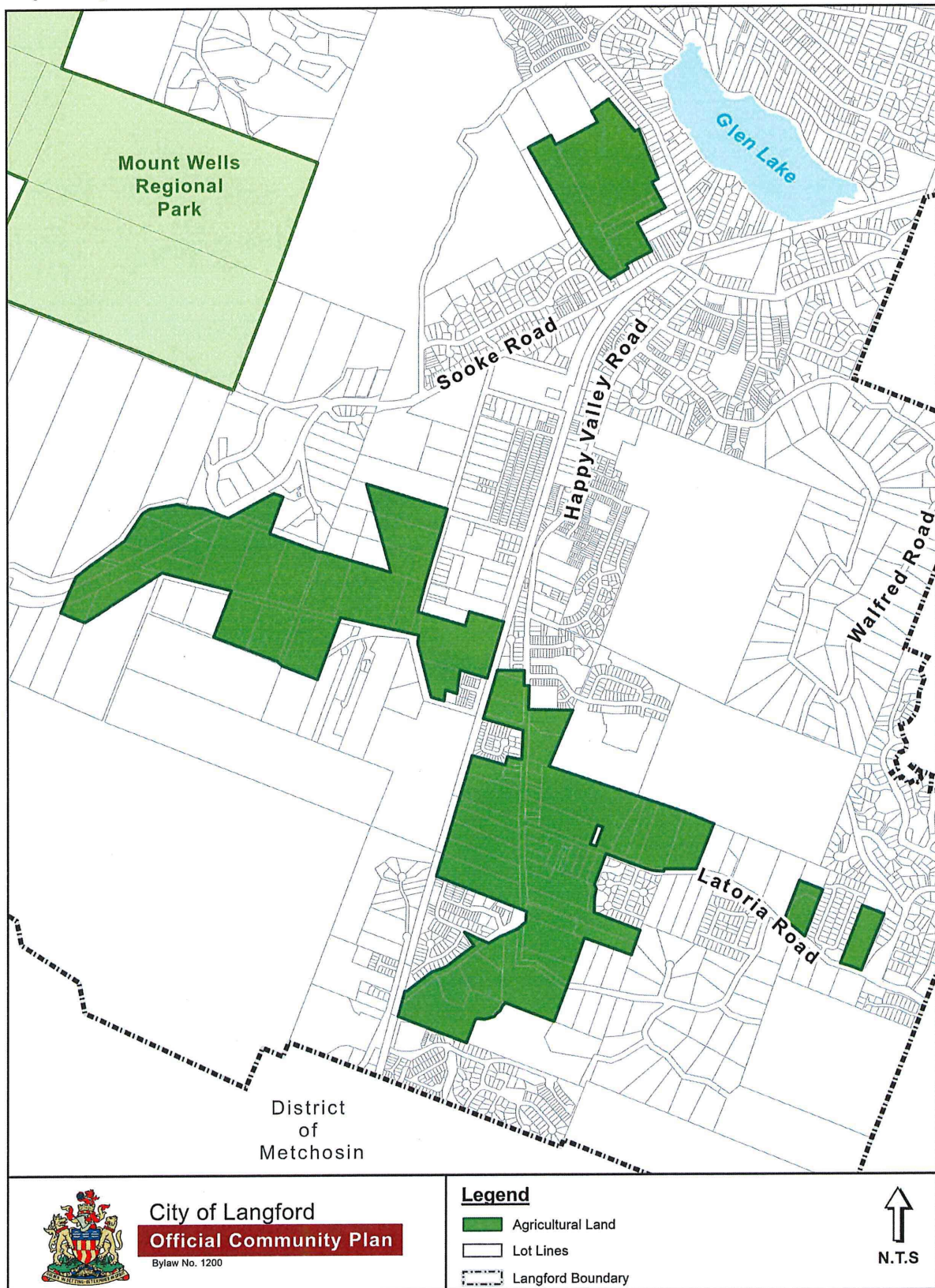


Map 9: Multi-Modal Transportation Strategy



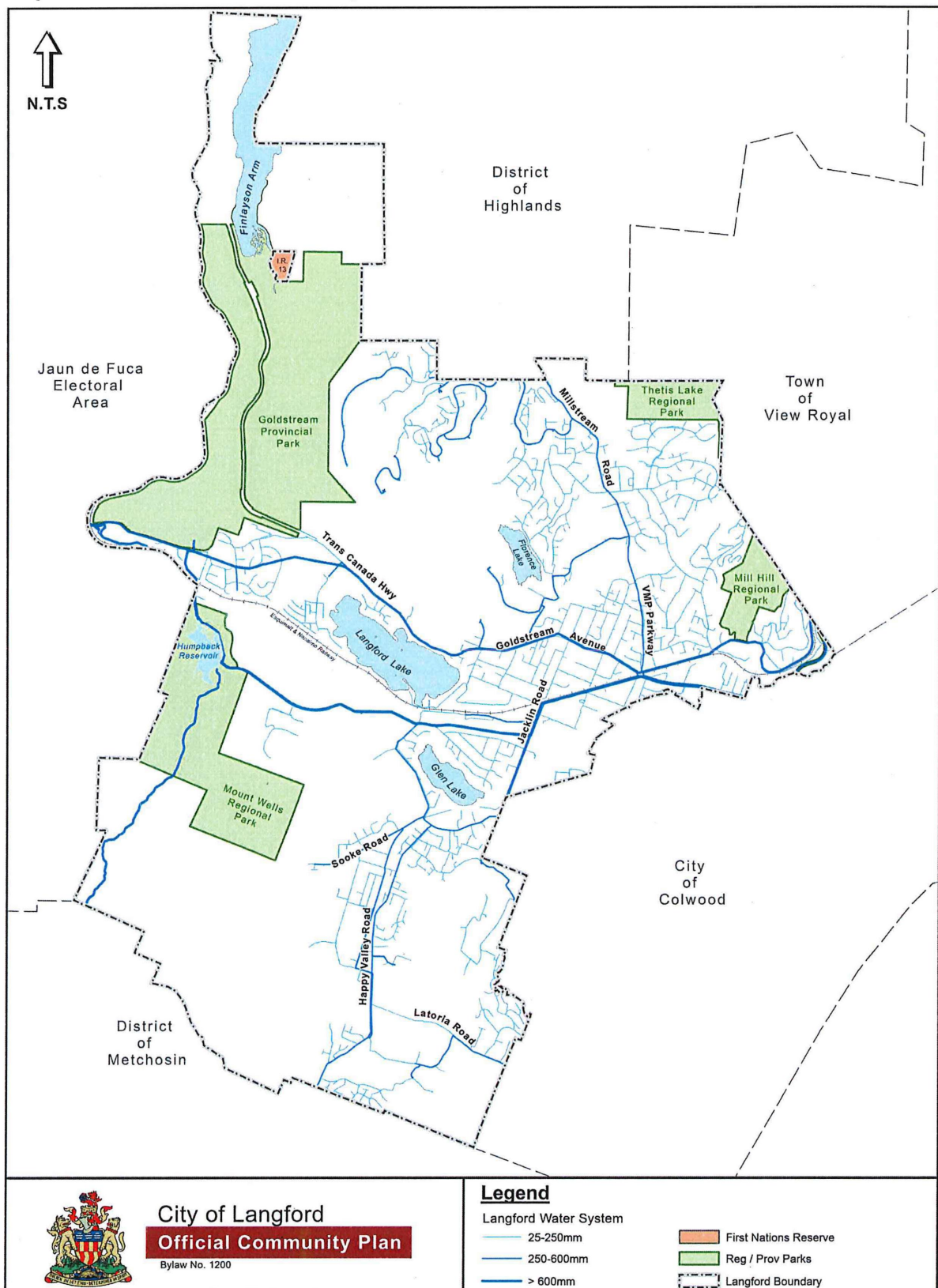


Map 10: Agricultural Land Reserve (ALR) Inventory



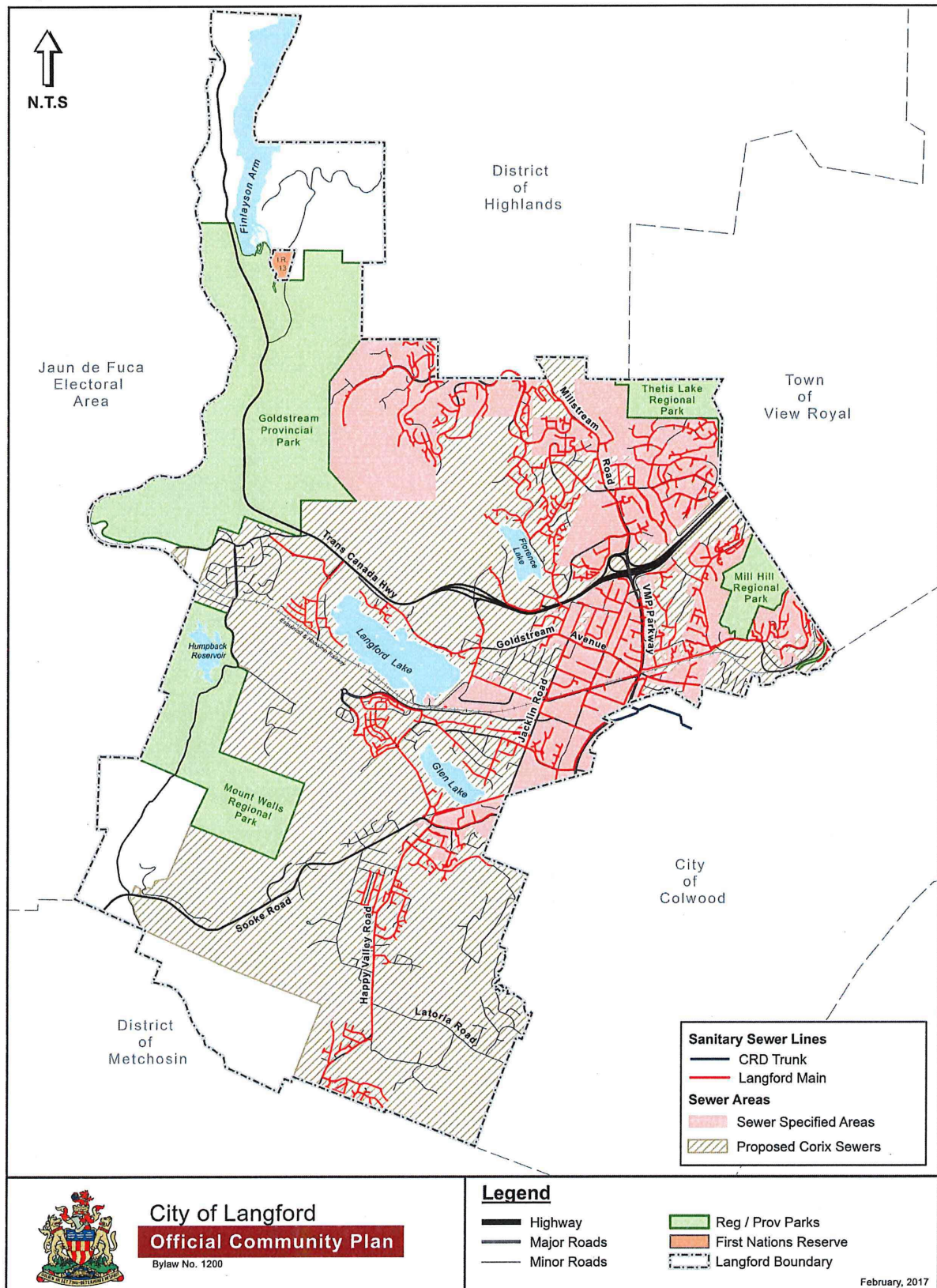


Map 11: Water Infrastructure Inventory



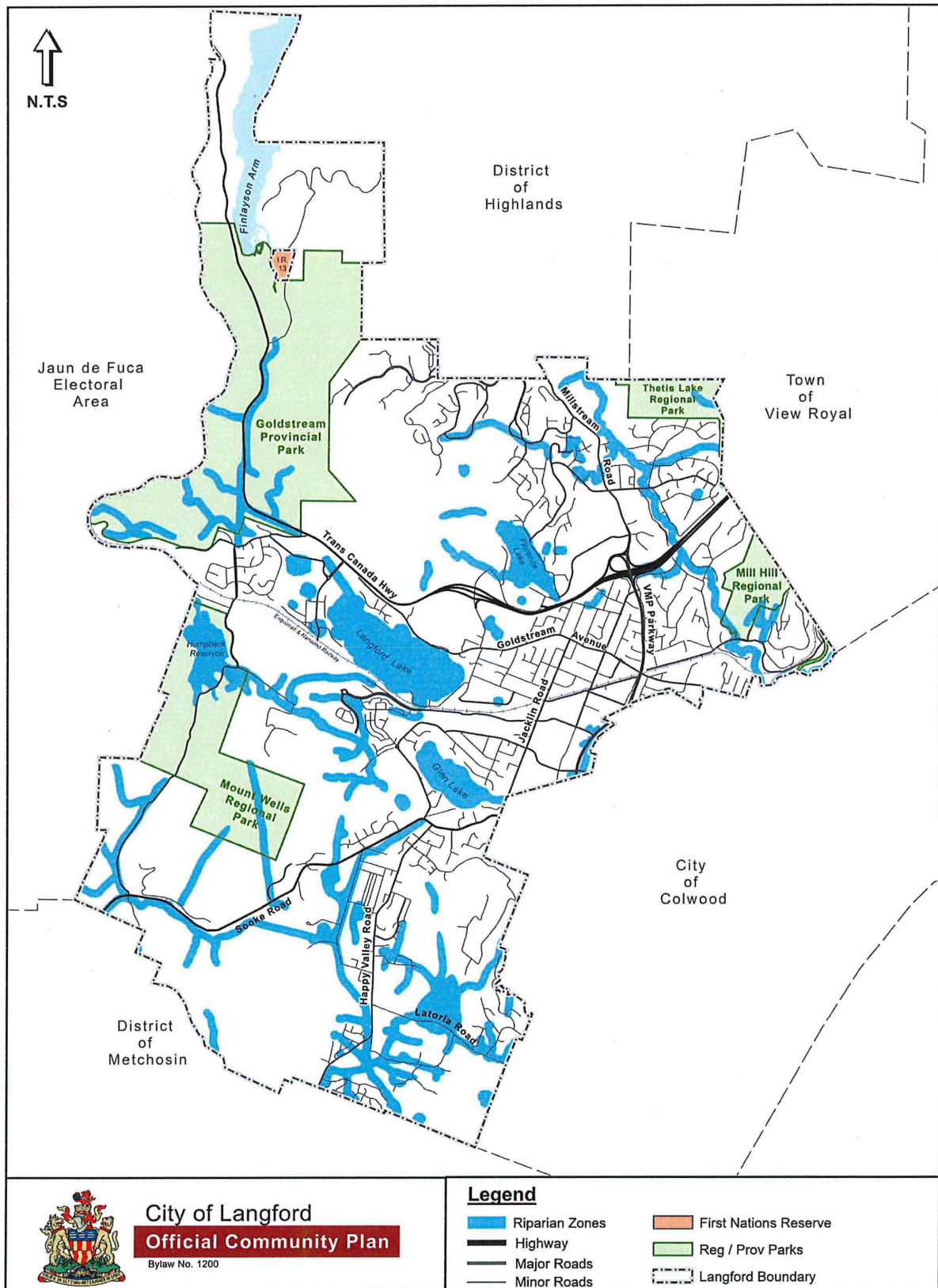


**Map12: Sanitary Sewer Inventory**



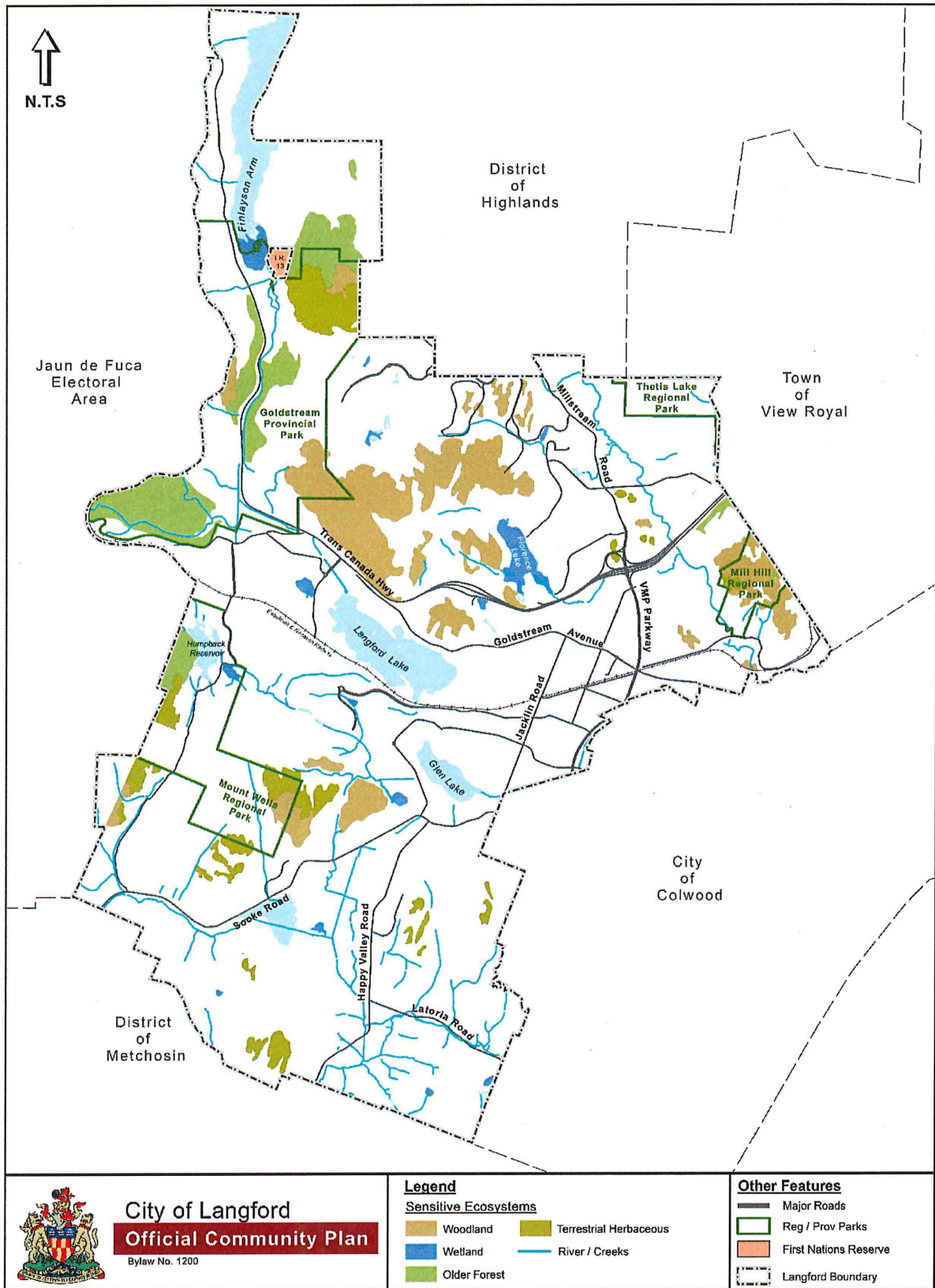


Map 13: Riparian Zones



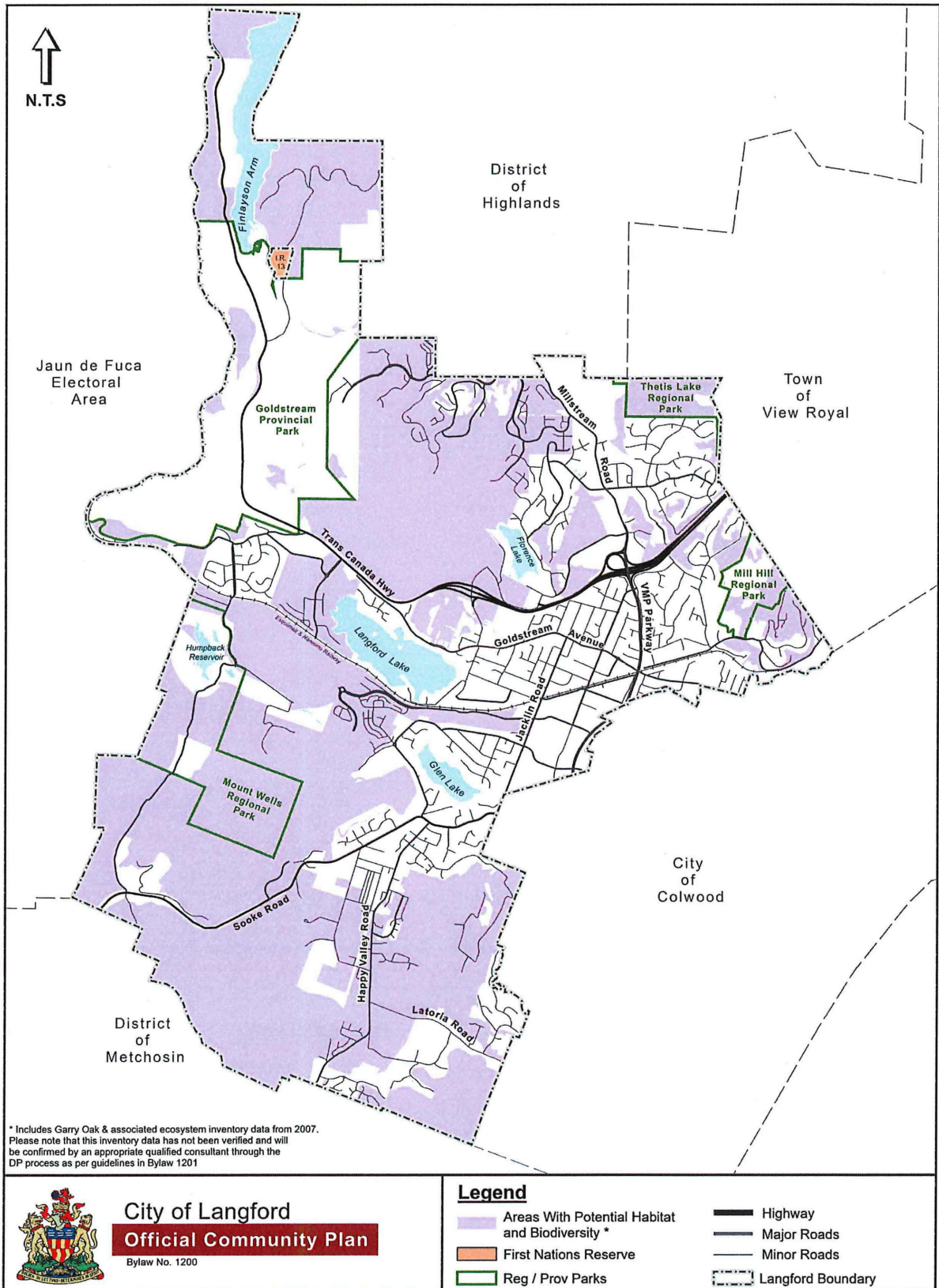


Map 14: Sensitive Ecosystems



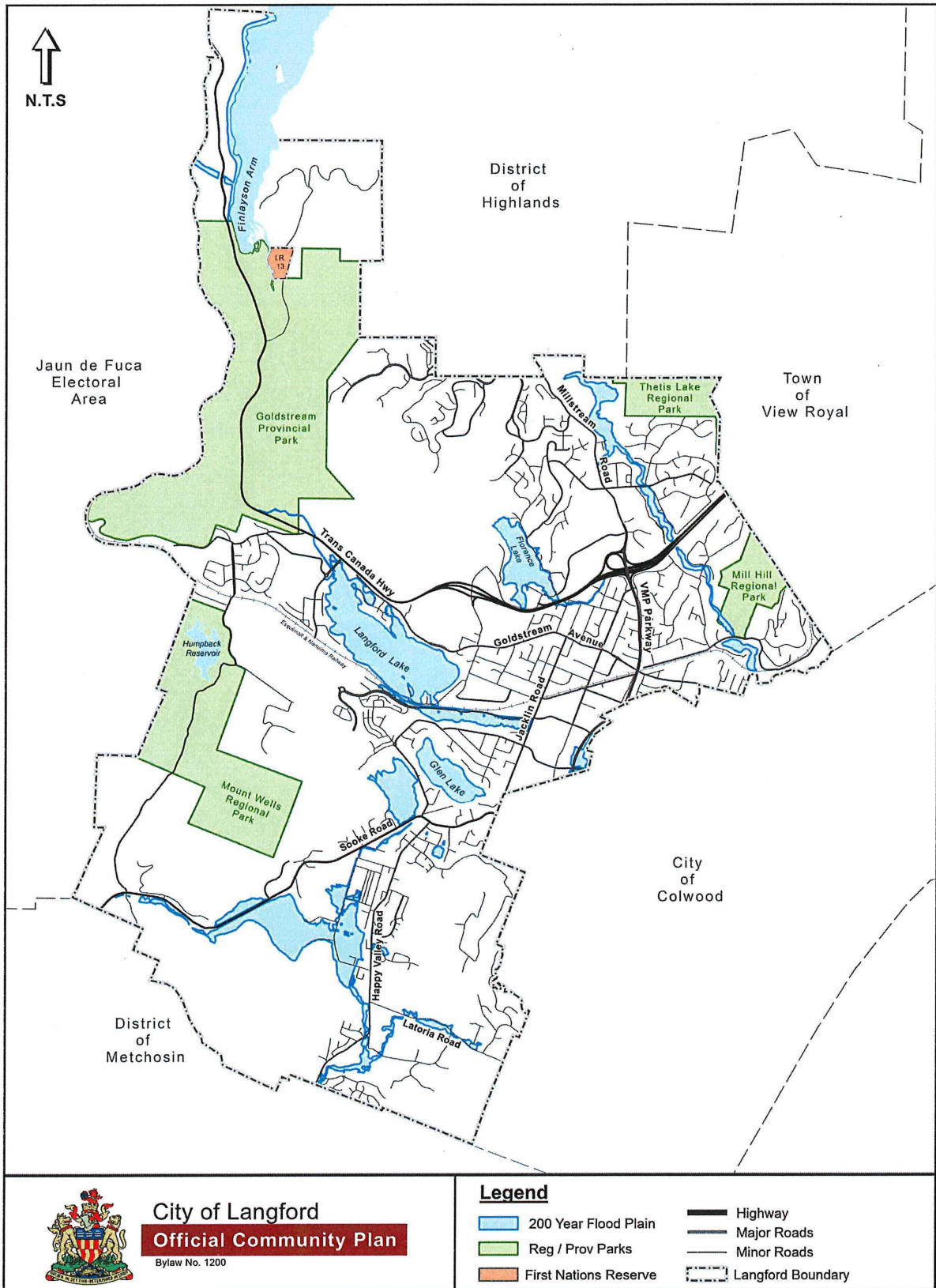


**Map 15: Areas with Potential Habitat and Biodiversity Values**



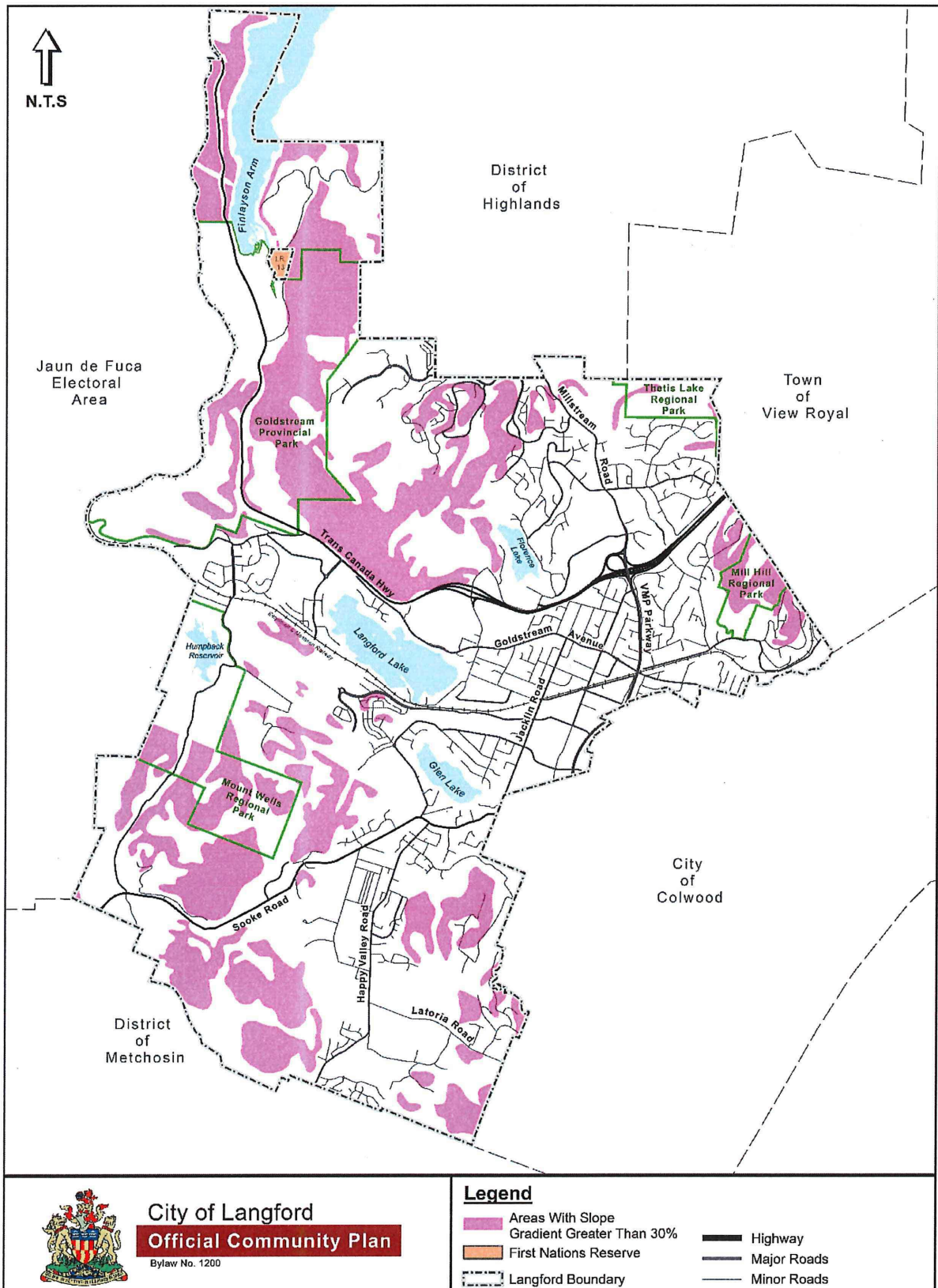


Map 16: 200 Year Flood Plain

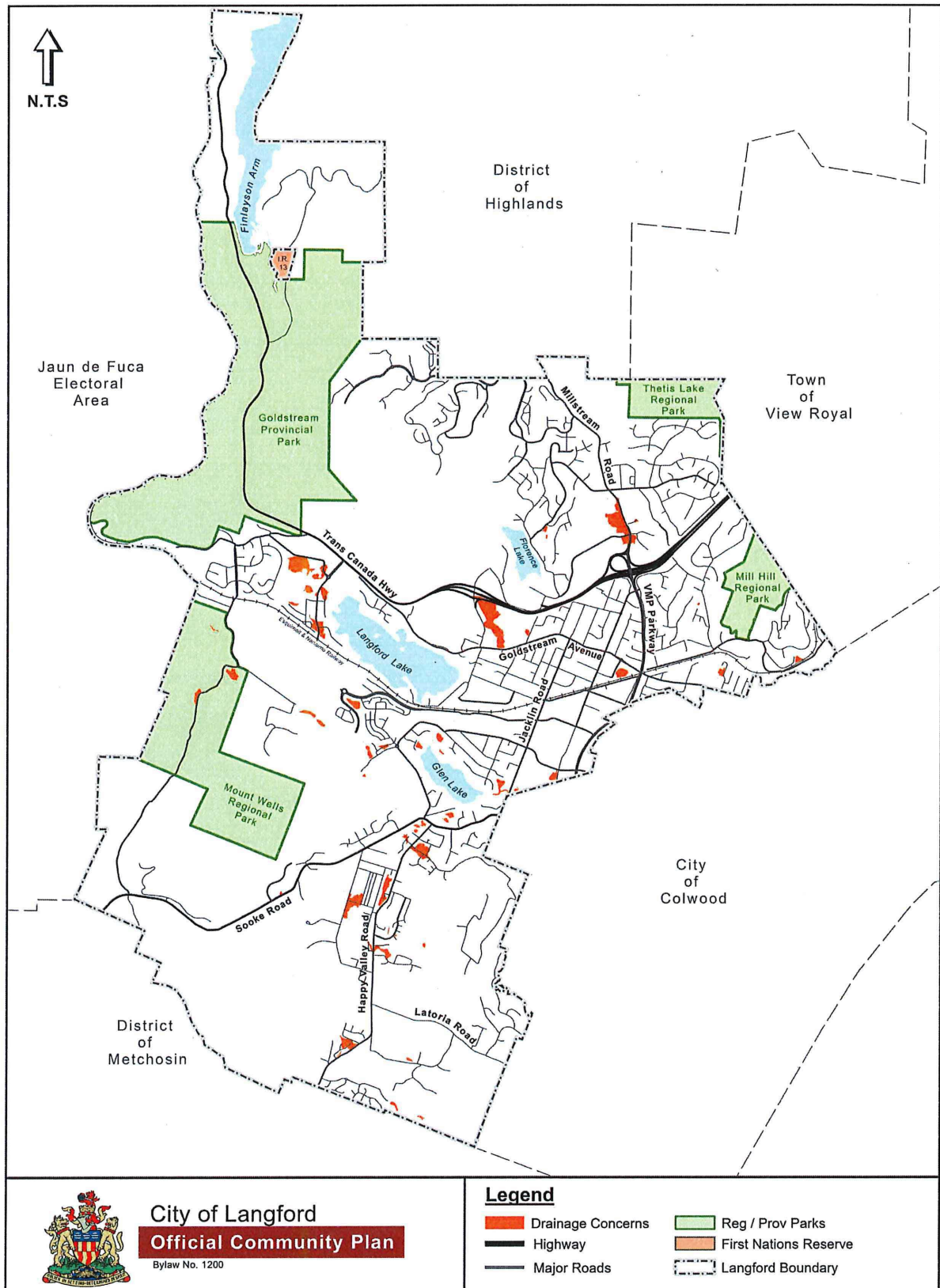




Map 17: Steep Slopes



**Map 18: Drainage Concerns**





Map 19: Interface Fire Hazard Areas

