

CITY OF LANGFORD
ROAD CLOSURE BYLAW NO. 2246, 2026
Road Closure Bylaw

WHEREAS, pursuant to Section 40 of the *Community Charter*, Council may, by bylaw, close a portion of a highway to traffic and remove the dedication of the highway, if prior to adopting the bylaw, Council publishes notices of its intention in a newspaper and provides an opportunity for persons who consider they are affected by the bylaw to make representations to Council;

AND WHEREAS the Council of the City of Langford deems it expedient to close to traffic and remove the dedication of that portion of highway comprising a total of approximately 0.130 ha (13,993.08 ft²) which was dedicated as highway by Plan VIP7235 and is shown outlined in a bold black line on reference plan EPP149819 prepared by Minda Riley, BCLS 810, a reduced copy of which is attached hereto (the "Road Closure Plan");

AND WHEREAS notices of Council's intention to close that portion of highway to traffic and to remove its dedication as highway were published in a newspaper and posted in the public notice posting place, and Council has provided an opportunity for persons who consider they are affected by the closure to make representations to Council;

AND WHEREAS the Council does not consider that the closure of the Closed Road will affect the transmission or distribution facilities or works of utility operators;

NOW THEREFORE the Council of the City of Langford, in open meeting assembled, enacts as follows:

1. Attached to this Bylaw as Schedule "A" and forming part of this Bylaw is a reduced copy of the reference plan of highway closure.

(the "Road Closure Plan").
2. The City hereby authorizes the closure to traffic and removal of highway dedication of:

the 0.130 ha (13,993.08 ft²) of highway which were dedicated as highway by Plan VIP7235 and labelled "Closed Road" on the Road Closure Plan.

(the "Closed Road").
3. On deposit of the Road Closure Plan and all other documentation for the closure of the Closed Road in the Victoria Land Title Office, the Closed Road is closed to public traffic, it shall cease to be public highway, and its dedication as a highway is cancelled.
4. The Mayor and the Chief Administrative Officer of the City are authorized to execute all deeds of land, plans and other documentation necessary to affect this road closure and disposition.

5. This Bylaw may be cited as “Road Closure Bylaw No. 2246, 2026, (a portion of Aldwynd Road)”.

READ A FIRST TIME this 7th day of April, 2026.

READ A SECOND TIME this 7th day of April, 2026.

READ A THIRD TIME this 7th day of April, 2026.

APPROVED BY THE MINISTRY OF TRANSPORTATION AND INFRASTRUCTURE this 14th day of April, 2026.

ADOPTED the day of, 2026.

PRESIDING COUNCIL MEMBER

CORPORATE OFFICER

SCHEDULE "A" – Road Closure Plan

Reference Plan of Part of Road Dedicated by Plan 7235, Section 72, Esquimalt District; to Accompany City of Langford Road Closure Bylaw No. 2246.

Plan EPP149819

Pursuant to Section 40 of the Community Charter.
Pursuant to Section 120 of the Land Title Act.
BCGS 92B.043



The intended plot size of this plan is 500 mm in width by 432 mm in height (A size) when plotted at a scale of 1:400

Legend:

Grid Bearings are derived from observations between Geodetic Control Monuments #079912 (C2N2510) and #052345 (13N2706) and are referred to the central meridian of UTM Zone 10.

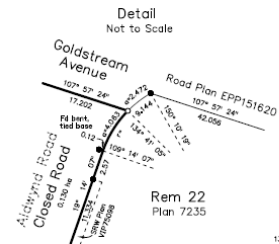
This plan shows horizontal ground level distances unless otherwise specified. To compute grid distances, multiply ground level distances by the average combined factor of 0.9999026. The average combined factor has been derived from Geodetic Control Monuments #079912 and #052345.

The UTM Coordinates and estimated absolute accuracies achieved are derived from the published NAD83(CRS) coordinate listings for Geodetic Control Monuments #079912 and #052345.

- Lead Flag Found
- Lead Flag Placed
- Standard Iron Post Found
- Standard Iron Post Placed
- ⊙ Control Monument Found
- NF Denotes Nothing Found
- ▲ Denotes Iron Post in Asphalt

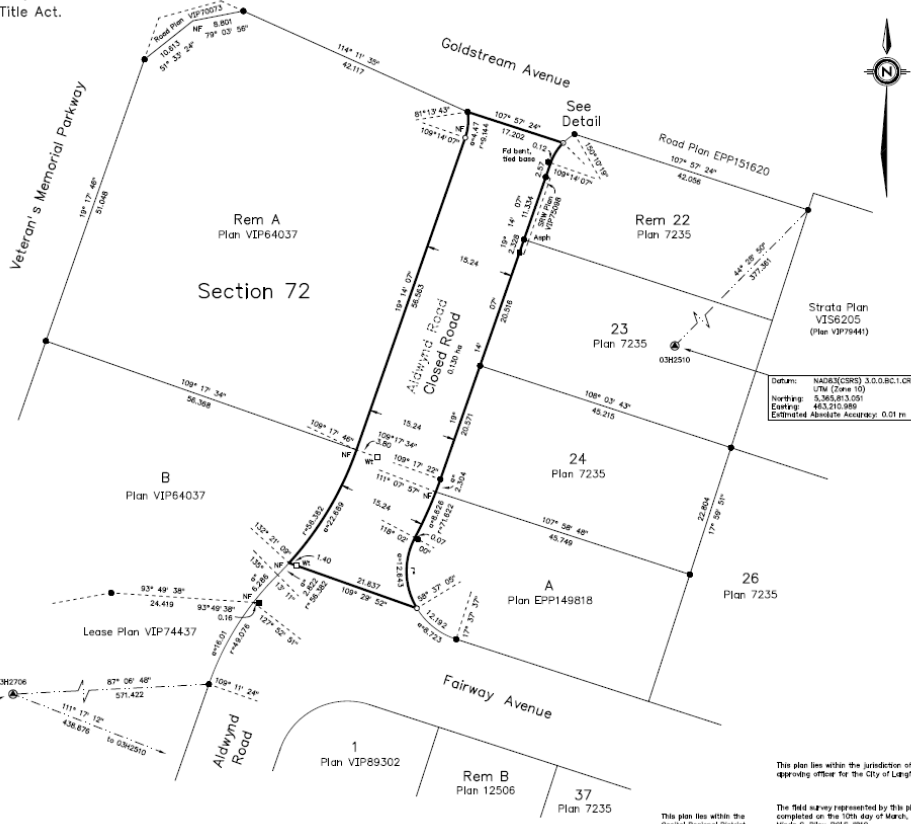
Integrated Survey Area No. 51
City of Langford
NAD83(CRS) 5.0.0.BC1.CRD

Note:
This plan shows one or more witness posts which are not set on the true corners.



Date: NAD83(CRS) 5.0.0.BC1.CRD
UTM (Zone 10)
Northing: 5,365,972.319
Easting: 462,802.218
Estimated Absolute Accuracy: 0.01 m

McIlveney Riley Land Surveying Inc.
#13 - 2244 Sooke Road
Victoria, B.C. V8B 1X1
(250) 474-0538
www.mrls.ca
File: 7343REF_EPP149819



Date: NAD83(CRS) 5.0.0.BC1.CRD
UTM (Zone 10)
Northing: 5,365,972.319
Easting: 462,802.218
Estimated Absolute Accuracy: 0.01 m

This plan lies within the jurisdiction of the engineering officer for the City of Langford
The field survey represented by this plan was completed on the 10th day of March, 2026
Minda C. Riley, BCLS #870